



# FARMER MEETING

## SUSTAINABLE IRRIGATION EXPANSION IN THE MIDDLE ALABAMA RIVER BASIN

**10 AM - NOON**

**APRIL 23, 2021**

### BLACKBELT RESEARCH AND EXTENSION CENTER

*60 Co Rd 944, Marion Junction, AL 36759*

Learn about a new  
cost-share program  
that will promote  
sustainable irrigation  
expansion in your area.

**FOR MORE INFORMATION, CONTACT YOUR LOCAL CONSERVATION DISTRICT OFFICE.  
OR CONTACT:**

**ASHLEY HENDERSON | 334-301-5026 | [ASHLEY.HENDERSON@SWCC.ALABAMA.GOV](mailto:ASHLEY.HENDERSON@SWCC.ALABAMA.GOV)**

THE SUSTAINABLE IRRIGATION  
EXPANSION PROJECT IN THE  
MIDDLE ALABAMA RIVER BASIN IS  
MADE POSSIBLE BY THE  
FOLLOWING ORGANIZATIONS:



ALABAMA  
SOIL & WATER  
CONSERVATION  
COMMITTEE



AUBURN  
UNIVERSITY

USDA  NRCS  
U.S. Department of Agriculture  
Natural Resources Conservation Service



  
THE UNIVERSITY OF  
ALABAMA IN HUNTSVILLE



# PROGRAM PURPOSE

Funds from USDA NRCS (PL-566) will be used to sustainably increase acres under irrigation in the Middle Alabama River Basin to minimize damage to plant health, improve soil health, protect basin water quality and quantity, and minimize cultural and environmental impacts.

These diffuse, or decentralized, on-farm irrigation systems suitable for farming practices specific to the Middle Alabama River Basin will adhere to State and Federal law and sustainably use water systems while minimizing environmental and cultural resource impacts.



## POTENTIAL BENEFITS

Protect plant health and vigor

Supplement soils with poor water holding capacity during times of drought

Improve recovery of water-stressed systems

Support current agricultural land use

Assist rural communities





## BASIN FACTS

The project area includes Butler, Clarke, Dallas, Lowndes, Marengo, Monroe, Perry, and Wilcox Counties.

The Basin totals 1,424,869 acres, with 16% being identified as agricultural land.

37.9% of operators in the Basin are considered full-time operators.

58.6% of operators are considered socially disadvantaged operators.

1,410 farmers are considered "new and beginner" farmers, meaning they have less than 10 years experience on current operations.

## STEPS FOR THE PROGRAM

**Step 1.** Preliminary Investigation/Feasibility Report (AU/UAH)

**Step 2.** Watershed Plan/ Environmental Assessment (AU/UAH)

**Step 3.** Farmer Application and Selection (SWCC)

**Step 4.** On-Farm Evaluations (NRCS)

**Step 5.** Dispersal of cost-share funds and Irrigation Implementation (NRCS/SWCC)



**FOR MORE INFORMATION, CONTACT YOUR LOCAL CONSERVATION DISTRICT OFFICE.  
OR CONTACT:**

**ASHLEY HENDERSON | 334-301-5026 | [ASHLEY.HENDERSON@SWCC.ALABAMA.GOV](mailto:ASHLEY.HENDERSON@SWCC.ALABAMA.GOV)**

# APPLICATION PROCESS

Producers submit an application to the Alabama Soil and Water Conservation Committee (ALSWCC).

The applications are ranked by the ALSWCC.

Potential locations undergo on-site environmental and cultural evaluations conducted by NRCS personnel.

Operations are selected for funding, irrigation infrastructure is implemented, and cost-share funds are released.

## PROGRAM ELIGIBILITY

Applicants must own or operate eligible land that is currently used for agricultural, forestry, or livestock production.

**Includes:**

**Conventional and organic  
Specialty crops and commodity crops  
Forestry and wildlife  
Livestock operations**

Eligible land includes cropland, rangeland, pasture, nonindustrial private forest land, and other farm or ranch lands located within the project boundary.

**History of irrigation is NOT required.**

## POSSIBLE INFRASTRUCTURE

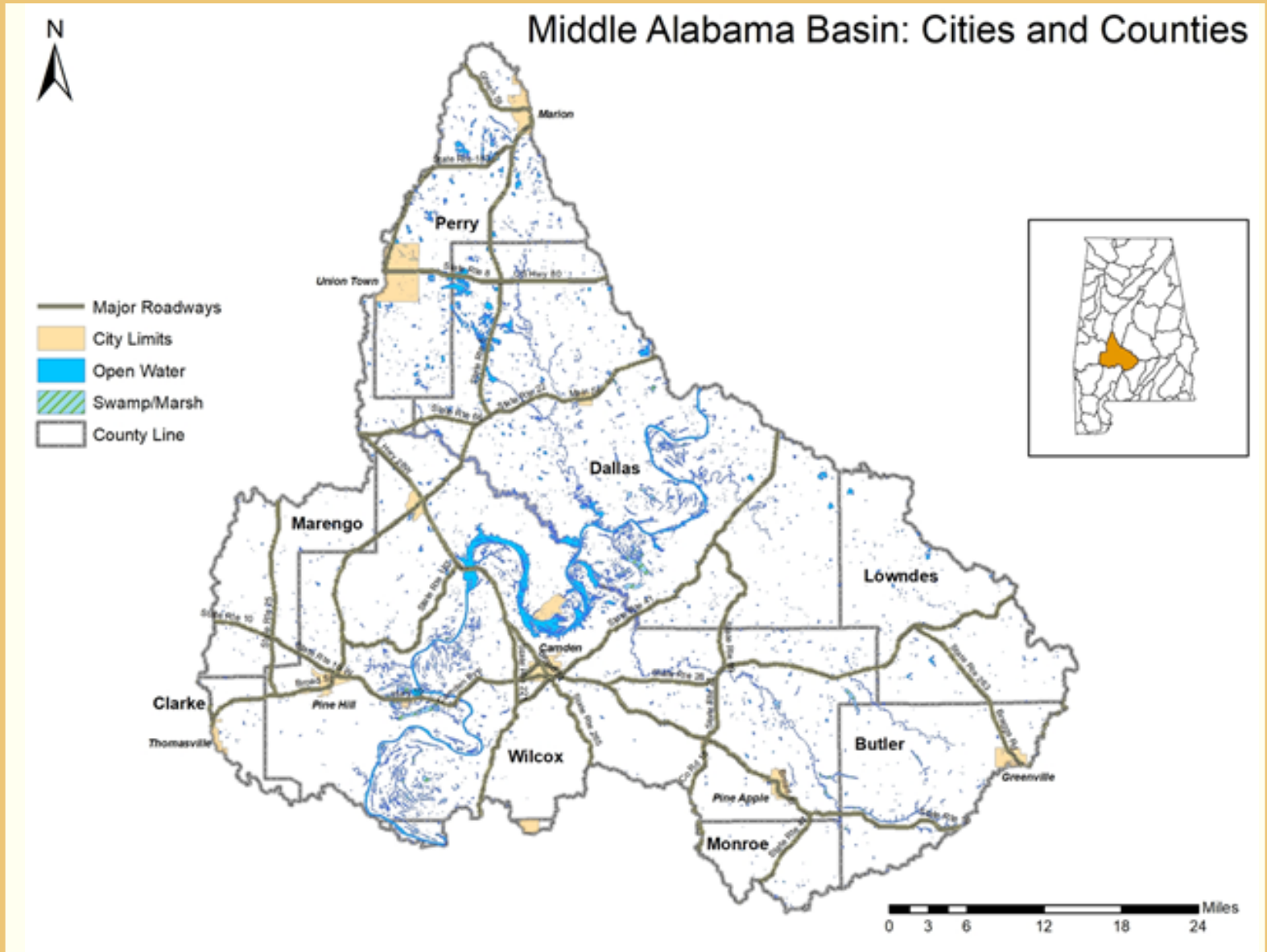
Irrigation Pipeline  
Pumping Plant  
Water Well  
Tow Traveler Systems  
Microirrigation

Subsurface and surface drip  
Irrigation canal  
Ditch Lining  
Sprinkler System/Center Pivot  
Reservoir

In addition to this, the ALSWCC will provide additional equipment at no cost to the producer including a 3-year irrigation management plan, soil sensors, and flow meters.



# PROJECT AREA MAP



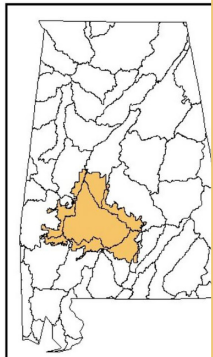
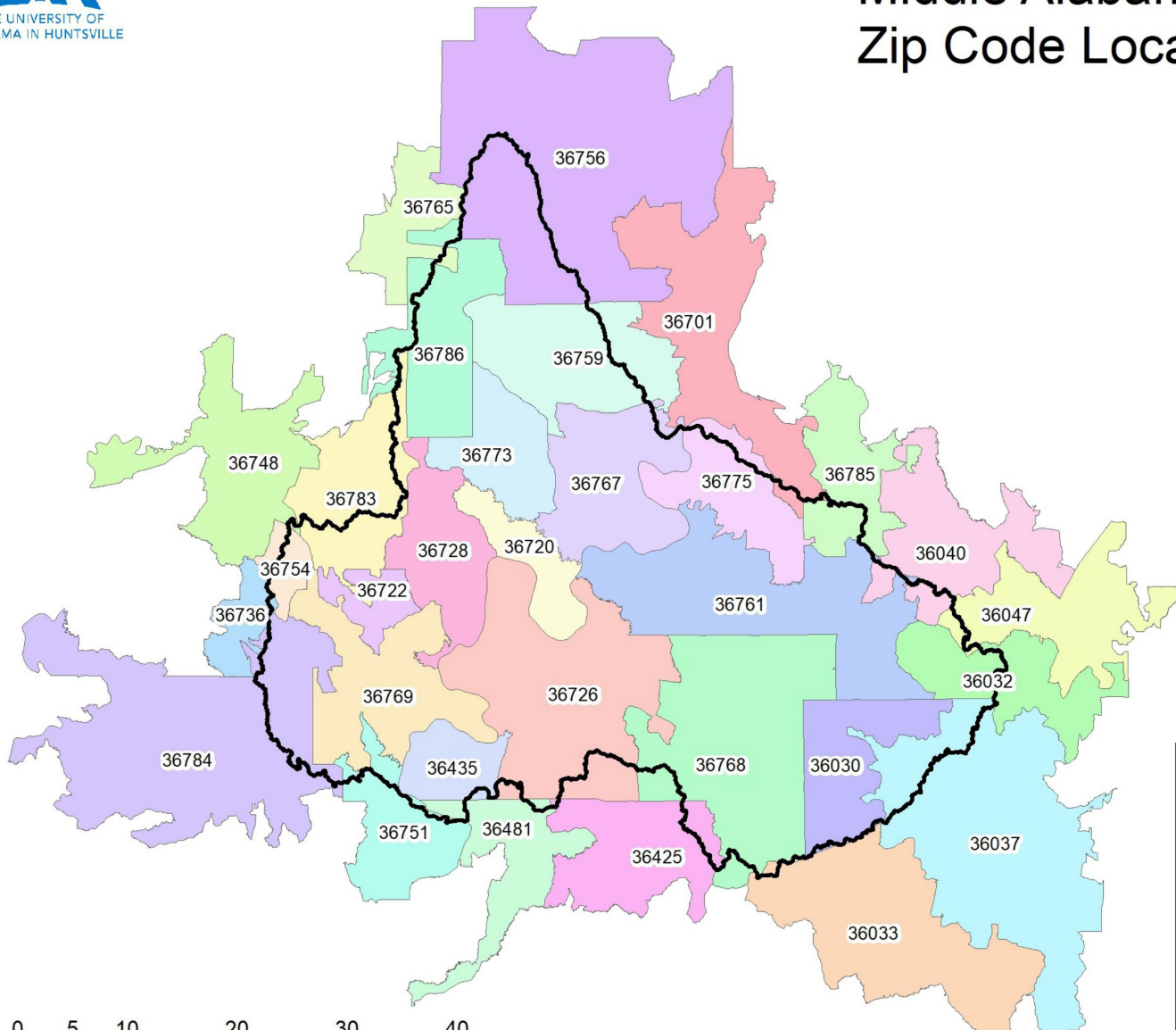
**Butler, Clarke, Dallas, Lowndes, Marengo,  
Monroe, Perry, Wilcox, and Conecuh\***

\*The project boundary includes 102 acres of Conecuh County. However, this land is currently not used for agricultural production and is therefore ineligible for this program.

# MAP WITH ZIP CODES



## Middle Alabama Basin Zip Code Locations



**Butler, Clarke, Dallas, Lowndes, Marengo,  
Monroe, Perry, Wilcox, and Conecuh\***

\*The project boundary includes 102 acres of Conecuh County. However, this land is currently not used for agricultural production and is therefore ineligible for this program.